

# FCZD Board of Supervisors Briefing

---

2025 Storms, Flooding, Landslides  
Response and Recovery

January 14, 2026



FLOOD CONTROL  
ZONE DISTRICT



FLOOD CONTROL  
ZONE DISTRICT

# Incident Summary



# Incident Summary

Emergency

Management



## County Executive

Emergency Proclamation: 12/8/2025



## Emergency Operations Center

Activation: 12/9/2025 - 12/19/2025

### Life Safety

- Alert & Warning
- River Watch
- Levees
- Washington Task Force 1

### Property Preservation

- Sandbags
- Infrastructure (Bridge, Roadways)

### Human Services

- Outreach
- Assessment
- Resources/Basic Needs



# Incident Recovery Summary

Emergency

Management



**Activated Disaster Assistance Council**  
Supporting Unmet Needs

**Implemented County Public Assistance  
+ Data Collection Process**  
Due to Washington State 1/23/26

**Implemented Public & Private Damage  
+ Impact Collection Processes**  
12/15/25

**Participated in Damage Assessment  
with Washington State, Federal Emergency Management  
Agency, and Small Business Administration**  
12/28/25

**Concentrated Areas**  
Town of Wilkeson, Town South Prairie, Alderton Area  
Unincorporated, City of Pacific (Pierce County)

**Scattered other areas**  
City of Puyallup, Riverside Fire District Area  
Unincorporated

**Greatest Impacts**

- Dan and Bill's RV Park
- Bowman Hilton RV Park
- River Park Estates RV and Mobile Home Park

# Public Damage Assessments



**119 Reports**

Online & Call Center as of 1/2/26

**122 Resident**

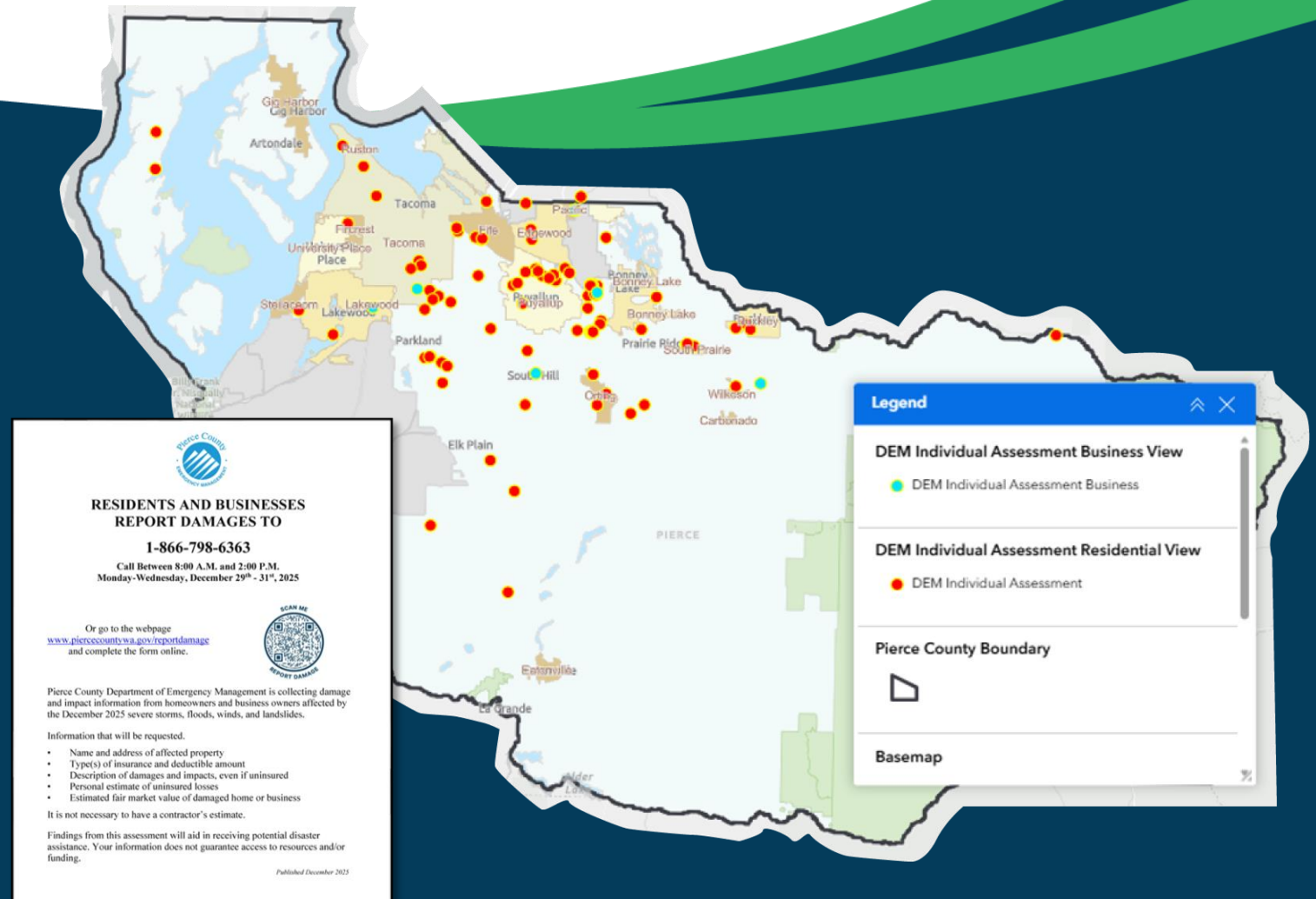
- 53 affected
- 18 minor
- 40 destroyed
- 11 no report

**9 Business**

- 5 affected
- 2 minor
- 2 destroyed

## Key Takeaways

- May not meet state or federal disaster thresholds and no dedicated fund source exists at state or county
- Interim housing remains a concern
- Long-term unmet needs





# Public Damage Assessments Cont.



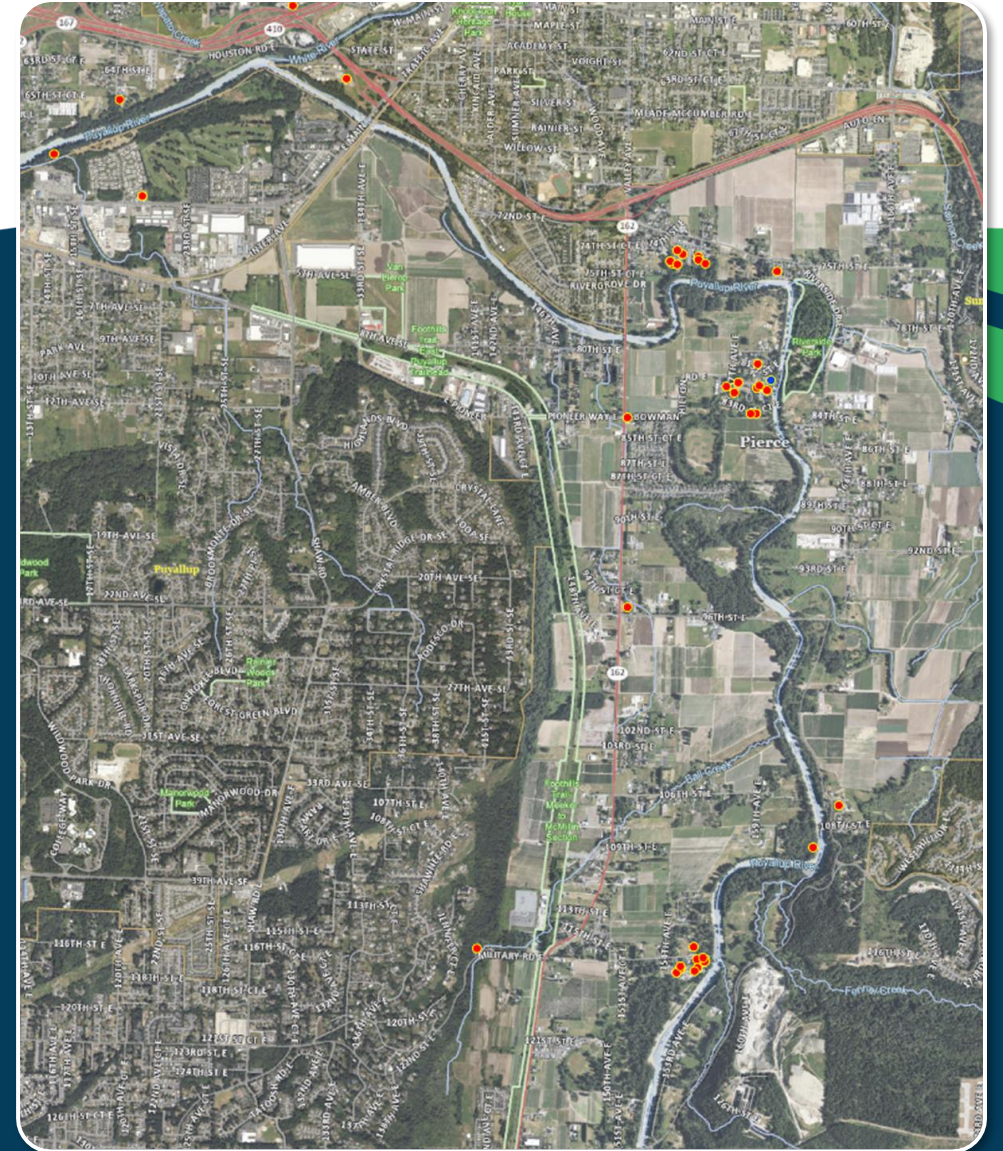
AFTER



WATER INUNDATION  
AT RV PARK



BEFORE





# Public Damage Assessments Cont.





**PLANNING & PUBLIC  
WORKS**

# Incident Summary







# Incident Summary

## RIVERS



- Monitored river levels, forecasts, and river gauges to **provide situational awareness for responding agencies.**
- **Conducted Rapid Damage Assessments** of flood risk reduction infrastructure throughout the event.
- Held daily briefings with the US Army Corps of Engineers and other agencies regarding the **release of water from Mud Mountain Dam.**
- Obtained **aerial photos and video of the river systems** during a Dec. 12 flight in coordination with the Pierce County Sheriff's Office
- Made **emergency levee repairs** to the Puyallup and Carbon Rivers
- Conducted a **Comprehensive Damage Assessment** of the levee system the week of Dec. 29. PPW to develop repair plan based on findings



# Incident Summary

## ROADS



- **Addressed and monitored roadway issues** including water over the roadway, blocked storm drains, landslides/erosion, and downed trees.
- **Closed roads or lanes** as needed.
- **Inspected and repaired roads** damaged by landslides and flooding (in progress).
- **Inspected county bridges.**
- **Coordinated with utility companies** regarding trees of concern involved with utility lines.





# Incident Summary

## SOLID WASTE



- Conducted **property debris inspections**.
- **Provided roll-off boxes** from Murrey's at 4 larger sites.
- Gave **disposal vouchers and clean-up assistance** to affected businesses and residents.
- Shared **information on proper disposal** of certain types of solid waste.



# Incident Summary

## OTHER SUPPORT

### Development Services

- Conducted **post-flood damage assessments** at over 50 locations with three teams of inspectors.
- Set up post-incident **expedited permitting process** for flood-damaged buildings.
- Worked with DEM to **integrate post-incident damage data** and photo collection.

### Sewer

- Provided **around-the-clock coverage** at wastewater treatment plant.
- **Immediate on-site support in Wilkeson** when the town's wastewater treatment plant was overwhelmed by high flows.



# Statistics

**112** Water Over the Roadway & Drainage Concerns

**4** Daytime Rapid Damage Assessment (RDA) Teams Inspected Infrastructure Dec. 8-14

**775 ft.**

of Levee Received Emergency Repairs Across Five Locations Along the Carbon and Puyallup Rivers

**13** Road Closures

**7** Landslide & Erosion Concerns

**2** Equipment Technicians & **1** Service Truck Deployed

Dec. 16-19 as part of the Task Force One response in Skagit County

**3** Nighttime RDA Teams Inspected Infrastructure Dec. 8-11

**15** Tree Concerns

\*Numbers to increase as cleanup efforts continue

**40,000 lbs.** of Flood-Damaged Debris Collected\*

**30** Refrigerators Collected\*

**5,800** Empty Sandbags, **173 Tons** of Sand, and **500** Filled Sandbags Provided to Other Local Jurisdictions and Fire Departments

# Sizing Up Response & Recovery

## SUCCESSSES

- Levee system infrastructure investments
- Historical efforts to relocate
- Supporting Partners with Alert and Warning
- Vulnerable families were able to be served, even over the holidays
- Local communities and trusted partners stepped in to provide immediate response
- More people assessed for services and engaged in ongoing case management/getting resources

## CHALLENGES

- Vulnerable residents impacted by flooding.
  - Value of older mobile home or RV that cannot be relocated.
- Limited funding flexibility; more need for emergency housing costs during an event.
- Loss of funding to relocate Valleybrook Mobile Home Park.





FLOOD CONTROL  
ZONE DISTRICT

# Recommendations

## Recovery and Support for Future Emergencies

### **Creation of a state-led voluntary buyout program.**

- Acquisitions of flood-prone and Repetitive Loss Area properties.

### **Better support for those living in RVs before, during and after a flood, including recovery resources and funding for this type of housing.**

- Temporary RV locations out of the flood zone (with amenities) where RVs can be moved to during an emergency.
- Contracted tow vehicles.





FLOOD CONTROL  
ZONE DISTRICT

# Recommendations

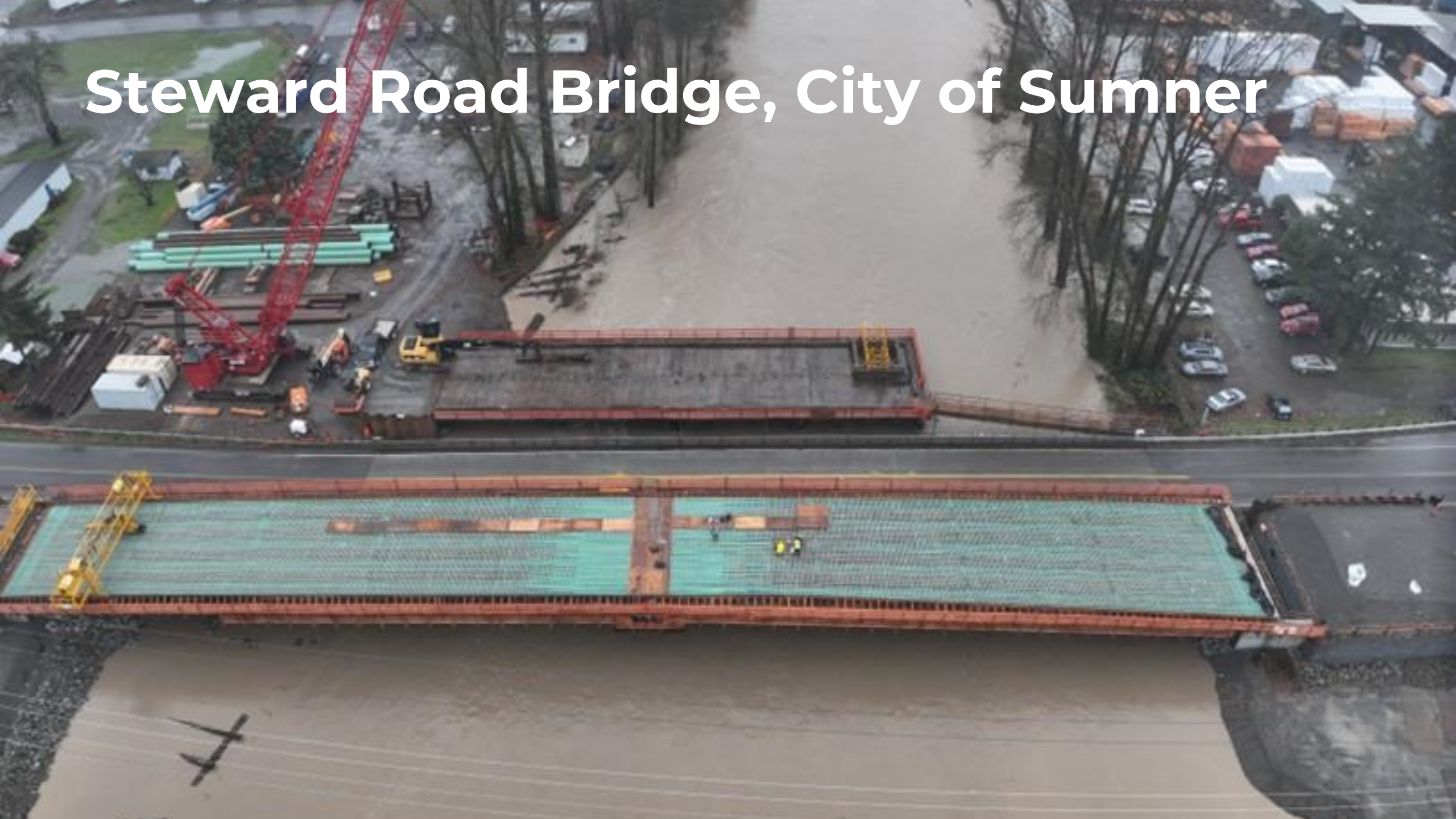
## Funding Support to Reduce Flood Damage & Risk

- Post-flood acquisition funding support to **purchase substantially damaged homes from high-risk flood areas.**
- Expanded investment into **Floodplain Reconnection projects.**





# Steward Road Bridge, City of Sumner





# Clear Creek Floodplain Reconnection Project



**60+ parcels would have  
been inundated**



# Orville Road Revetment





# Questions?

